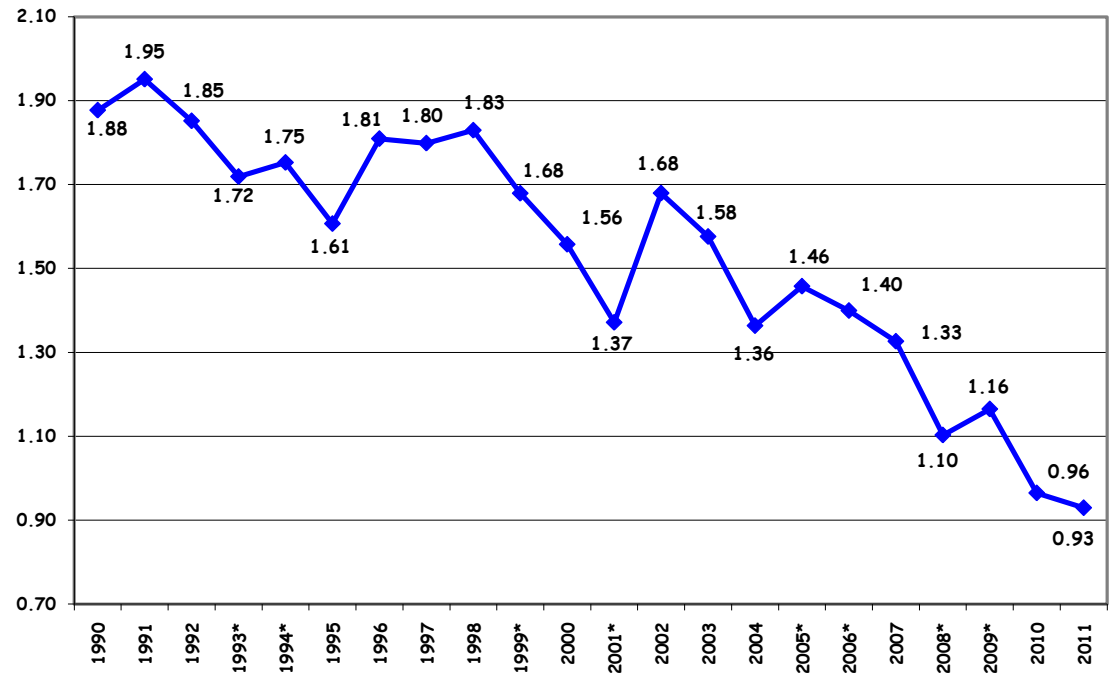


YEAR	FATALITIES	VEHICLE MILES (MILLIONS)	FATALITIES PER 100 MILLION VMT
1990	262	13,957	1.88
1991	275	14,095	1.95
1992	270	14,581	1.85
1993*	254	14,777	1.72
1994*	271	15,464	1.75
1995	254	15,809	1.61
1996	293	16,194	1.81
1997	302	16,791	1.80
1998	315	17,219	1.83
1999*	295	17,570	1.68
2000	276	17,723	1.56
2001*	246	17,940	1.37
2002	307	18,281	1.68
2003	293	18,592	1.58
2004	254	18,630	1.36
2005*	276	18,938	1.46
2006*	269	19,223	1.40
2007	256	19,304	1.33
2008*	208	18,864	1.10
2009*	223	19,147	1.16
2010	190	19,698	0.96
2011	181	19,478	0.93



NEBRASKA FATALITIES PER 100 MILLION VEHICLE MILES TRAVELED



VMT - VEHICLE MILES TRAVELED

EFFECTIVE DATE OF NOTEWORTHY HIGHWAY SAFETY LEGISLATION

- *January 1, 1993 Administrative License Revocation (ALR) Law
- *January 1, 1994 .02 BAC (Zero Tolerance) Under 21 Drivers
- *August 28, 1999 Open Container Law
- *September 1, 2001 .08 BAC Law
- *September 4, 2005 Enhanced Penalties for Repeat DUI Offenders (.16 BAC)
- *July 14, 2006 Enhanced Penalties for Repeat DUI Offenders (.15 BAC)
- *January 1, 2008 Underage "Dram Shop" Law
- *January 1, 2009 Ignition Interlock Law